

**Hagenbring Store Sold to E. Kemper**

The Hagenbring Five Cents to One Dollar Store located at 113 E. Main street has been sold to Edward G. Kemper of Barrington, effective January 3.

Mr. Kemper, who has been the Watkins Remy agent for this community for five years, will manage the store as well as continue his Watkins connection. He is arranging to have headquarters for the latter right in his store.

The building will be redecorated for a grand opening to be held within a few weeks. Mr. Kemper reported that he will install an entirely new stock of goods including a nationally advertised brand of hosiery. Although known as the Kemper Store, it is an individual unit owned by Mr. Kemper and not a part of a group.

H. Hagenbring will retire from the retail field. He has arranged to sell his store at Macngo and has sold his Arlington Heights store to his son, Vernon.

**Farm Sale Calendar**

Friday, Jan. 8, 1:30—Clow sale—Northwest highway at Crystal Lake; cows, feed and grain.

Friday, Jan. 8, 1:30—Gerschofski sale—Schamburg center, Roselle road; cattle and equipment.

Tuesday, Jan. 12, 10 a. m.—Community Auction Sale—Bartlett Yards; cows, pigs and feed. See advertisement page 4.

Wednesday, Jan. 13, 12:30—Loomis sale—4 miles east of Dundee on Higgins road; livestock feed and machinery.

**Shenandoah National Park**

The Shenandoah, twenty-fifth of the national parks, lies wholly in the state of Virginia, covering 176,428 acres and extending north to a point just below Front Royal and south nearly to Waynesboro. Within it are waterfalls and streams, mountains, valleys and canyons, meadows, hollows and gaps of beauty and variety.

**Copied U. S. Constitution**

The Australian constitution was modeled on that of the United States.

**Woman's Relief Corps**

The officers of the Thomas W. Sweeney Woman's Relief Corps No. 85 for 1937 had their final club meeting at the home of Mrs. Herman Kuhlman Tuesday, Dec. 29.

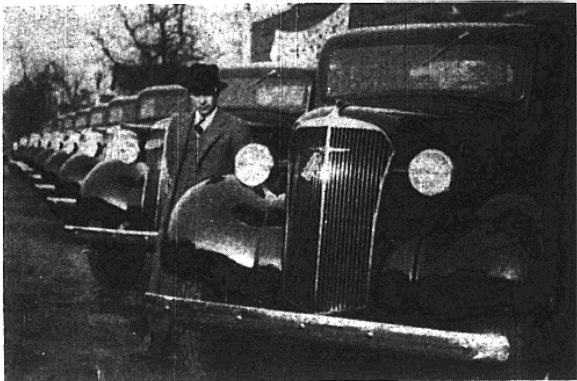
An enjoyable time was had by all 17 officers attending.

The assisting hostesses were Mrs. Lillia Walgren, Mrs. Emma Murphy and Mrs. Augusta Bartholomew.

The first W.R.C. meeting for 1937 will be held in Schroeder's hall Wednesday, Jan. 13. Dessert luncheon at 1:30 p. m.

—Press Committee.

**Record Breaking Chevrolet Fleet of Trucks Sold**



Fred Schauble, manager of Schauble Chevrolet Sales, 117 N. Cook street, is shown above with the fleet of 1937 Chevrolet trucks sold last week to the United Air Lines. This group of 1 1/2 ton trucks comprises one of the largest motor vehicle sales ever completed in Barrington. The trucks were assembled here for delivery to company headquarters at Chicago, Salt Lake City, Omaha, Cheyenne, Cleveland and Newark.

**Survey of Suburban Park Areas Listed**

Continued from page 1

population, 880; ratio, 14.6.

Arlington Heights—Total acres, 35.5; population, 5760; ratio, 4.2.

Barrington—Total acres, 25.4; population, 2610; ratio, 7.1.

Bensenville—Total acres, 19; population, 2090; ratio, 9.1.

Crystal Lake—Total acres, 45; population, 4020; ratio, 11.2.

Des Plaines—Total acres, 38; population, 10,160; ratio, 3.7.

Elgin—Total acres, 320.3; population, 38,210; ratio, 8.4.

Elkhorn—Total acres, 27; population, 2,470; ratio, 10.9.

Elmwood Park—Total acres, 7.5; population, 12,640; ratio, 6.

Huntley—Total acres, 25; population, 690; ratio, 10.9.

Itasca—Total acres, 4; population, 700; ratio, 5.7.

Lake Villa—Total acres, 4.8; population, 520; ratio, 9.2.

Mount Prospect—Total acres, 21.5; population 1610; ratio, 13.3.

Palatine—Total acres, 12; population, 2460; ratio, 4.9.

Park Ridge—Total acres, 18.6; population, 11,210; ratio, 1.7.

Roselle—Total acres, 0.6; population, 1000; ratio, 0.6.

Silver Lake—Total acres, 10; population, 380; ratio, 26.3.

Walworth—Total acres, 9; population, 960; ratio, 9.4.

Wauconda—Total acres, 14; population 580; ratio, 24.1.

Williams Bay—Total acres, 10.5; population, 660; ratio, 15.9.

**CORRECTION**

By a transfer of \$5000 to the surplus fund of the First National Bank of Barrington, the bank has been enabled to lend "larger" amounts to borrowers. This was stated in an article in The Review last week as "large" amounts. The article concerned payment of dividends to stockholders.

**Local Brevities**

Lano Kollam, son of Dr. 2nd Mrs. Cecil Kollam, 115 Coolidge avenue, is recovering from a case of mumps.

Miss Dorothy Dottierer, 549 Division street, is a surgical patient at the Sherman hospital, Elgin, where she underwent an operation for the removal of her appendix Friday.

Mrs. Harry Wewetzer of Grant avenue is ill with the mumps.

Mrs. Elmer Klopfenstein and infant son Albert Herman came (Card of Thanks)

Mrs. Jacob C. Mueller and family wish to express their sincere and heartfelt thanks for the kindness and sympathy shown them in the loss of their beloved husband and father.

home from the Sherman hospital, Elgin, Sunday.

Mrs. Donald Titterton, 123 W. Lake street, was ill with flu for several days during the past week.

Miss Marie Bettin of Barrington township entered a business college in Elgin Monday and is taking a commercial course.

Henry Rieke, 417 N. Cook street, has been ill during the last week with a severe cold.

W. O. Shepherd, 615 Grove avenue, left Saturday to attend the annual conference of the ministers of the John C. Winston Co. Mr. Shepherd will be away for ten days.

Ernest Holland of Barrington returned home last Friday from the Sherman hospital, Elgin where he had undergone an appendectomy.

**A&P MEAT Specials**  
FRIDAY AND SATURDAY

Cudahy's Gold Coin Smoked  
**Picnics**  
per lb. **17 1/2c**

Genuine Spring  
**Leg O' Lamb**  
per lb. **18 1/2c**

Lower Cuts Beef  
**Pot Roast**  
per lb. **12 1/2c**

Boneless Rolled  
**RIB ROAST**, lb. **19c**

Wilson Certified Spiced Luncheon Meat,  
1/2-lb. for **15c**  
Dried Beef 1/4-lb pkg **10c**

**LAMB SHOULDER ROAST**  
per lb. **10c**

Yearling Leg O' Lamb,  
per lb. **12c**

**VISIT YOUR A&P STORE THIS WEEK!**

**AP** *Great* **5c-10c SALE**

- |  |  |
|--|--|
| <b>5c Specials</b>                                 | <b>10c Specials</b>                                |
| VAN CAMP'S Tomato Soup, 10 1/2-oz. can <b>5c</b>   | DEL MONTE Sugar Peas 10-oz. can <b>10c</b>         |
| HERSHEY'S COCOA, 3 1/2-oz. can <b>5c</b>           | PRESERVES, Ann Page 8-oz. jar <b>10c</b>           |
| KIPPERED SNACKS, 3/4-oz. can <b>5c</b>             | CATSUP, Scott County, 14-oz. bottle <b>10c</b>     |
| HERSHEY'S Chocolate Syrup, 5 1/2-oz. can <b>5c</b> | WILSON'S Tamales, 11-oz. can <b>10c</b>            |
| CRACKERS, N.E.C. Premium small pkg <b>5c</b>       | CALUMET Baking Powder, 6-oz. can <b>10c</b>        |
| DAILY DOG FOOD, 1-lb. can <b>5c</b>                | CAMPBELL'S Chicken Soup, 10 1/4-oz. can <b>10c</b> |
| CAMAY SOAP, cake <b>5c</b>                         | BROADCAST Sliced Dry Beef, 3-oz. jar <b>10c</b>    |
| PALMOLIVE SOAP, cake <b>5c</b>                     | CORN, Golden Bantam, No. 2 can <b>10c</b>          |

**A & P Food Stores**

**LINDL'S Leadway Store**

FREE DELIVERY—9:30 and 10:30 a. m. & 3:30 p. m.  
PHONE 585—OPEN SUNDAYS—8 TO 12

- |                          |   |            |
|--------------------------|---|------------|
| <b>Oranges</b>           | Calif. Sunkist Large Size, Doz.                 | <b>25c</b> |
| <b>Apples</b>            | Rome Beauties, for eating, baking, pies, 4 lbs. | <b>25c</b> |
| <b>SUGAR</b>             | Pure Cane, Per 10-lb. bag                       | <b>51c</b> |
| <b>COFFEE</b>            | Flower Girl, Per 1-lb. bag                      | <b>17c</b> |
|                          | Chase and Sanborn Coffee, 1-lb. bag             | <b>25c</b> |
| <b>Soap Flakes</b>       | Crystal White 5-lb. pkg.                        | <b>29c</b> |
| <b>PEAS</b>              | Friends Standard No. 2 cans                     | <b>29c</b> |
| <b>Salmon</b>            | Leadway, Fancy Red Alaska, 1-lb. can            | <b>23c</b> |
| <b>BEANS</b>             | Flower Girl, Red Kidney, 2 cans                 | <b>19c</b> |
| <b>APRICOTS</b>          | Lakeview Fancy, whole peeled, No. 2 1/2 can     | <b>24c</b> |
| <b>CHICKEN A LA KING</b> | College Inn, 1-lb. can                          | <b>33c</b> |
| <b>CREAM OF WHEAT</b>    | large pkg.                                      | <b>22c</b> |
| <b>CRISCO</b>            | 1-lb. can                                       | <b>20c</b> |
| <b>FRUIT SALAD</b>       | Flower Girl, 2 No. 1 cans                       | <b>29c</b> |
| <b>GELATINE DESSERT</b>  | Lakeview, All Flavors, 4 pkgs.                  | <b>17c</b> |
|                          | GRAPE JAM, Lakeview, 1-lb. jar                  | <b>15c</b> |
|                          | HONEY, Lakeview Pure, 8-oz. jar                 | <b>10c</b> |
|                          | 16-oz. jar                                      | <b>18c</b> |
|                          | MACARONI, 3 1-lb. rolls                         | <b>25c</b> |

- MEAT SPECIALS**
- |                              |     |            |
|------------------------------|-----|------------|
| <b>POT ROAST</b>             | lb. | <b>15c</b> |
| Beef Rolled Rib Roast, lb.   |     | <b>25c</b> |
| Home Dressed Veal Liver, lb. |     | <b>35c</b> |
| Sliced Bacon, 1/2 lb.        |     | <b>15c</b> |
| Lamb Stew, lb.               |     | <b>9c</b>  |
| Lamb Shoulder Roast, lb.     |     | <b>15c</b> |

**We Are Prepared To Do It . . .**

OUR COMPLETE AND MODERN EQUIPMENT  
ENABLES US TO PRODUCE OR  
CREATE ANY KIND OF

**Job Printing**  
*At Reasonable Prices*

Letterheads	Booklets	Personal Cards
Envelopes	Programs	Informals
Business Cards	Menu Cards	Invitations
Billheads	Dance Bills or Window Cards	Anniversary Announcements
Statements	Auction Bills	Wedding Announcements
Ledger Sheets	Tickets of All Kinds	
Special Office Forms		

**If You Want It Printed BRING IT TO US**

**Barrington Review**  
Theatre Building, Barrington

*At Last...*  
**A BATTERY**  
**GUARANTEED**  
AS LONG AS YOU OWN YOUR CAR

When you buy a new PURE KATHANODE battery a written guarantee protects you against all battery replacement expenses. This is made possible by the long-lived Kathanode cell, famous for its worldwide use on airplanes, submarines, and railroads. "Life-time" construction insures plenty of reserve power—battery starts.



**PURE KATHANODE BATTERY**

**PURE OIL SERVICE**  
Hough and Main Streets  
ED BERKSON, Prop.  
"Barrington's Leading Service Station"

BE SURE WITH PURE